

ExxonMobil Canada East

Emergency Responder Pocket Guide

In the Event of a Pipeline Emergency Call
1-877-374-0770

In the Event of a Pipeline Emergency Call
1-877-374-0770



COMMITTED TO SAFETY

At ExxonMobil we are committed to safety and we work diligently to ensure the integrity of our pipeline facilities.

Despite these efforts, an accidental release of product could occur. Minimal as this risk may be, we want to ensure that you are prepared if an emergency situation arises.

That's why we developed this guide as a resource for first responders. Within the guide you'll find essential information and initial steps to follow.

For safety's sake, please take the time to read through this guide.



ABOUT NATURAL GAS

POLICE

FIRE DEPARTMENT

AMBULANCE / FIRST AID

RURAL MUNICIPALITIES

EPZ BOUNDARIES



COMMITTED TO SAFETY

At ExxonMobil we are committed to safe the integrity of our pipeline facilities.

Despite these efforts, an accidental release as this risk may be, we want to ensure that emergency situation arises.

That's why we developed this guide as a the guide you'll find essential information

For safety's sake, please take the time



COMMITTED TO SAFETY

At ExxonMobil we are committed to the integrity of our pipeline facilities. Despite these efforts, an accident as this risk may be, we want to ensure that emergency situation arises.

That's why we developed this guide as the guide you'll find essential information

For safety's sake, please take

ABOUT NATURAL GAS AND NATURAL GAS LIQUIDS (NGL)

ExxonMobil transports natural gas and natural gas liquids through its system. The products feature characteristics that include:

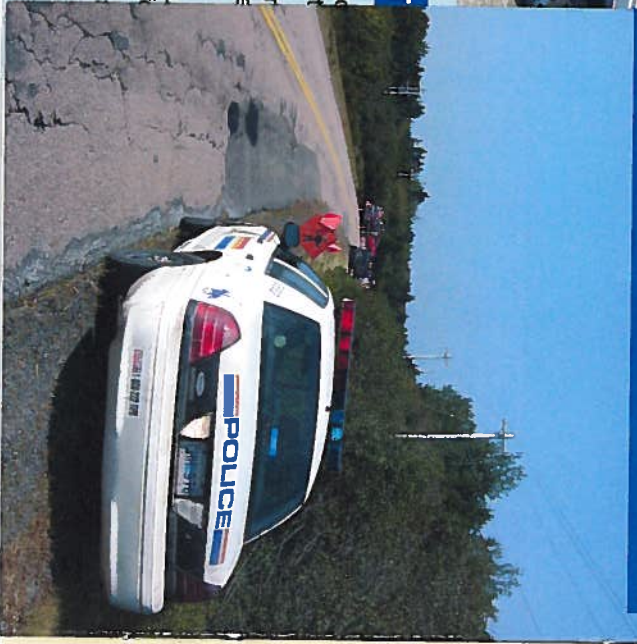
Natural Gas and Natural Gas Liquids

- The product is flammable in the presence of open flames, sparks and heat.
- Product vapors are lighter than air and may travel considerable distance to an ignition source.
- Product liquids are heavier than air and may pool or flow considerable distance to an ignition source.
- Escaping product may appear like fog or steam.
- Product is typically odorless



- High gas concentrations from the pipeline can displace oxygen in the atmosphere and become an asphyxiant. Low oxygen levels can cause dizziness, headaches, diminished awareness, poor judgment, impaired muscular coordination, convulsions, coma and possibly death.
- A static charge that results from the rapid escape of product may cause ignition in some cases.

INITIAL RESPONSE TO A NATURAL GAS OR NGL LEAK (Police)



ABOUT NATURAL GAS

POLICE

FIRE DEPARTMENT

AMBULANCE / FIRST AID

RURAL MUNICIPALITIES

EPZ BOUNDARIES

POLICE

FIRE DEPARTMENT

AMBULANCE / FIRST AID

RURAL MUNICIPALITIES

EPZ BOUNDARIES

- Stay upwind and uphill (for pooling NGL liquids)
- Do not drive near or into the vapor cloud.
- Remove any sources of ignition from the site.
- Do not approach a leak or suspected leak.
- Block off road access to incident area – a minimum of one 1 km in all directions.
- Immediately notify ExxonMobil at **1-877-374-0770** and supply details.
- Arrange a detour around the problem area.
- Set up a Command Location and act as the Incident Commander until arrival of Fire Department.
- Consider the evacuation of residents within the EPZ (Emergency Planning Zone) normally a minimum of one (1) km in all directions of the leak, unless confirmed other wise by EPZ planning maps



COMMITTED TO

At ExxonMobil we are committed to the integrity of our pipeline. Despite these efforts, an emergency situation arises as this risk may be, we have developed the guide you'll find inside.

For safety's sake, please

INITIAL RESPONSE TO A NATURAL GAS OR NGL LEAK (Fire Department)

- Stay upwind and uphill (for pooling NGL liquids)
- Assume Incident Command
- Do not drive near or into the vapor cloud.
- Remove any sources of ignition from the site.
- Do not approach a leak or suspected leak.
- Immediately notify ExxonMobil at **1-877-374-0770**.
- Cool area but do not extinguish a leaking gas or NGL liquids fire (Explosion Risk). Wait for isolation and de-pressure of pipeline by ExxonMobil Personnel.
- If gas is escaping from the pipeline or any components, assist the police in barricading the area and evacuating residents within the EPZ (Emergency Planning Zone) normally a minimum of one (1) km in all directions of the leak, unless confirmed other wise by EPZ planning maps



FIRE DEPARTMENT

- Water spray may be used to cool or push the gas vapors or flame away from victims for rescue purposes.
- Control secondary fires, providing it is safe to do so.

AMBULANCE / FIRST AID

RURAL MUNICIPALITIES

EPZ BOUNDARIES



COMMITTED

At ExxonMobil we are committed to the integrity of our pipeline. Despite these efforts, an emergency situation arises as this risk may be, we have developed the guide you'll find inside.

For safety's sake,

INITIAL RESPONSE TO A NATURAL GAS OR NGL LEAK (Ambulance / First Aid)

- Stay upwind and uphill (for pooling NGL liquids)
- Do not drive near or into a vapor cloud.
- Remove any sources of ignition from the site.
- Do not approach a gas leak or suspected leak. Stay beyond the EPZ (Emergency Planning Zone) normally a minimum of one (1) km in all directions of the leak, unless confirmed other wise by EPZ planning maps
- Do not enter the EPZ until instructed by the On Scene Commander (Normally Fire Department, Police, ExxonMobil Supervisor).
- Immediately call ExxonMobil at **1-877-374-0770**.
- With supervision and support from the On Scene Commander / Fire Department, move persons from hazardous atmospheres to a fresh air environment.



AMBULANCE / FIRST AID

RURAL MUNICIPALITIES

EPZ BOUNDARIES

- High gas concentrations from the pipeline can displace oxygen in the atmosphere and become an asphyxiant. It may also have a narcotic effect.
- Low oxygen levels can cause dizziness, headaches, diminished awareness, poor judgment, impaired muscular coordination, convulsions, coma and possibly death.

INITIAL RESPONSE TO A NATURAL GAS OR NGL LEAK (Rural Municipalities)

- Stay upwind and uphill (for pooling NGL liquids)
- Do not drive near or into a vapor cloud.
- Remove any sources of ignition from the site.
- Do not approach a gas leak or suspected leak. Stay beyond of the EPZ (Emergency Planning Zone) normally a minimum of one (1) km in all directions of the leak.
- Do not enter the EPZ until instructed by the On Scene Commander (Normally Fire Department, Police, ExxonMobil Supervisor).
- Immediately call ExxonMobil at **1-877-374-0770**.
- Assist the police / Fire Department in barricading the area and evacuating residents within the EPZ (Emergency Planning Zone)
- Act as "Point of Contact" between the On Scene Commander, Evacuees and/or Municipal Residents.

COMM

At ExxonMobil, we are committed to the integrity of the information we provide. Despite the challenges of this emergency, we are committed to providing the information you need. That's why we've created this guide. For safety.

EMERGENCY PLANNING ZONE BOUNDARIES

The boundaries of the Emergency Planning Zone have been determined for each size and pressure rating of the pipeline operated by ExxonMobil. For the various pipelines ExxonMobil operates the Emergency Planning Zone is identified as follows:

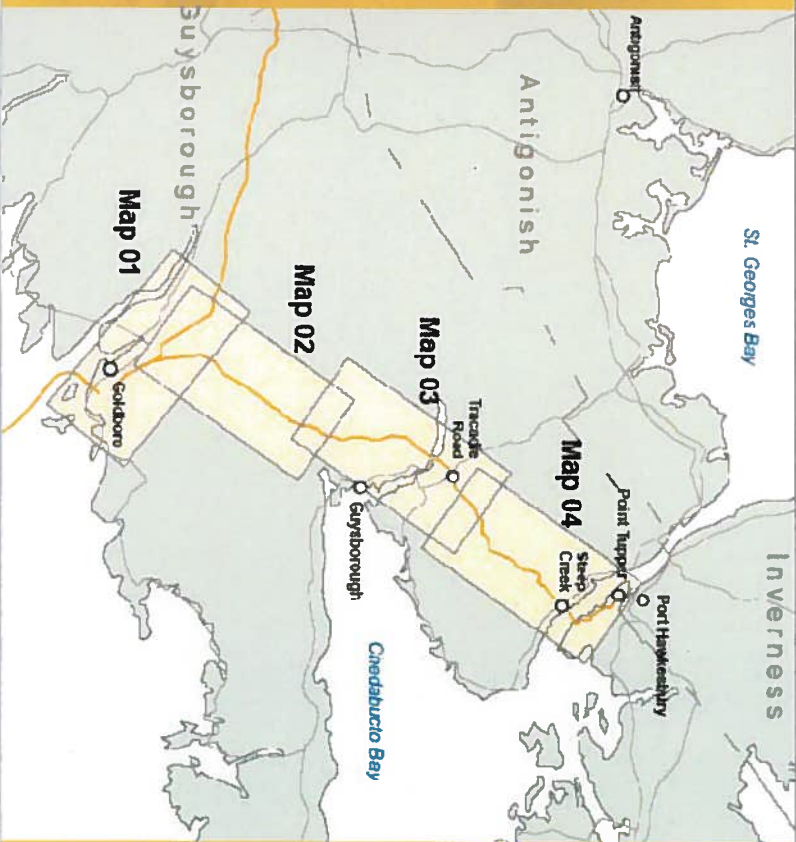
Goldboro Shoreline to Plant	-Natural Gas Line	NPS 26 inch:	800 meters
Point Tupper Lateral	-Natural Gas Liquids Line	NPS 8 inch:	500 meters

If there is doubt about which pipeline is causing the incident use 800m for the Emergency Planning Zone until instructed otherwise by the On Scene Commander or ExxonMobil personnel.



RURAL MUNICIPALITIES

EPZ BOUNDARIES



EPZ BOUNDARIES

At the time of the incident, the Emergency Planning Zone boundaries are as follows: